

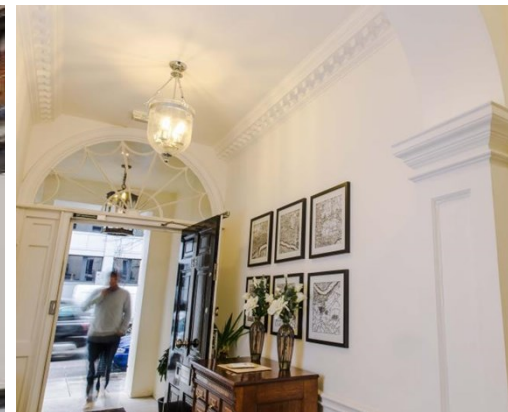


Matthew Blair Solutions

020 7960 0261

MBS Property

www.mbspropertysearch.co.uk



The Boutique Workplace Company 128 Wigmore Street, Marylebone, W1U 3SB

Location

Wigmore Street office space is right bang centre in the middle of the West End. It's just moments from Bond Street and Oxford Street and has Selfridges as a neighbour.

Description

This stunning Grade II-listed Georgian townhouse workspace really is the bees knees. We are really very excited about Wigmore Street. Behind the handsome white-fronted exterior lies four floors of stylish work space. The property is packed with period features with a contemporary interior. There's also the most beautiful luxury flat at the top of the building which residents can enjoy at a discount rate (told you this site is a winner!).

Key Features

- Fully furnished with 24 hour access
- Fibre-optic broadband
- Meeting rooms
- Luxury Serviced Apartments available

Rent: From £680.00 per workstation, per month

Area: 60 sqft – 2500 sqft (approx.)

Workstations: 1 – 100 employees

Contact



Tony Beck

020 7960 0261

tony@matthewblairsolutions.co.uk

MBS Property

Mercury House, 117 Waterloo Road, London SE1 8UL

Registered no. 09361329 / Registered in England / Registered office is 89 Tolworth Park Road, KT6 7RJ.
Matthew Blair Solutions is trading as MBS Recruitment and MBS Property since Oct'2017.