

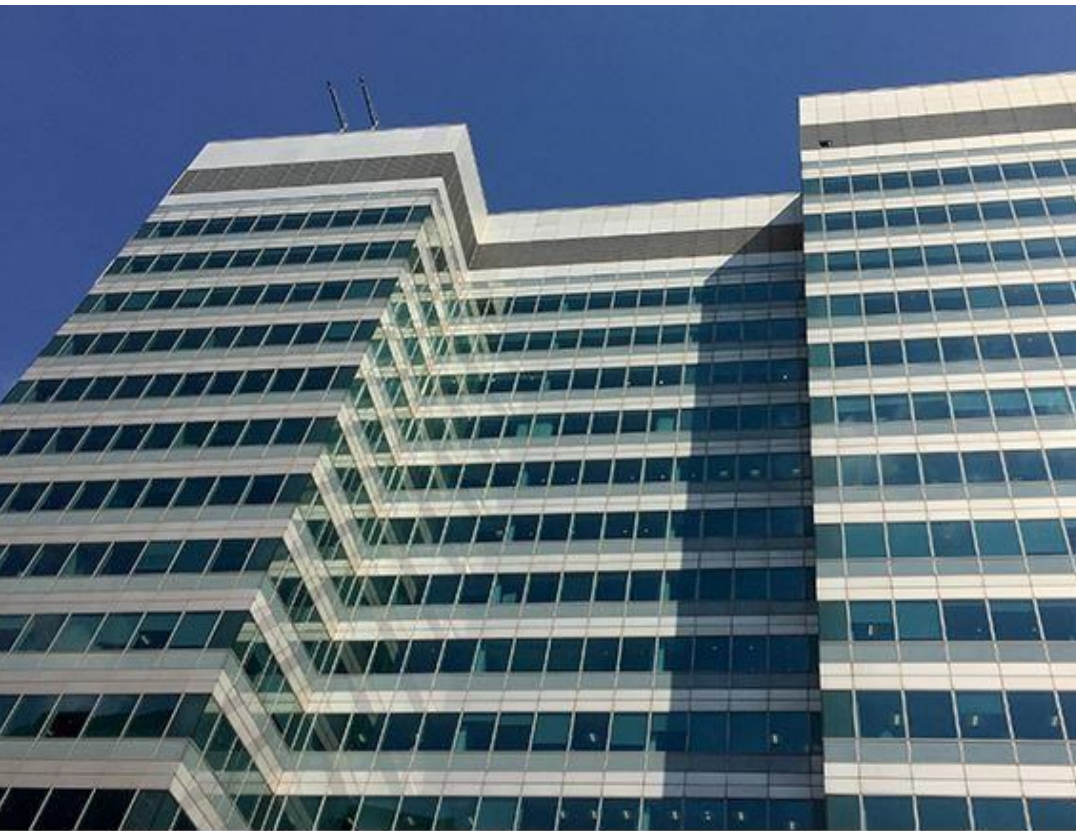


Matthew Blair Solutions

020 7960 0261

MBS Property

www.mbspropertysearch.co.uk



## 189 Marsh Wall, Canary Wharf, E14 9SH

### Location

Canary Wharf is London's newest financial district and is home to the European Headquarters of many companies including HSBC, Clifford Chance, Barclays and Thomson Reuters.

There are excellent transport links with South Quay station being a 2-minute walk from the centre and Central London being easily accessible via the tube, DLR and boat.

### Description

Orega Canary Wharf will be designed to promote productivity and employee engagement in a sleek and stylish setting. The modern offices, well-equipped meeting rooms and relaxing breakout spaces will mirror the professional image of the Docklands area.

### Key Features

- Individually air-conditioned offices
- State of the art IT and telecoms
- 24-hour CCTV security & building access
- Showers & Secure bike storage
- Professionally managed reception

**Rent:** From POA per workstation, per month

**Area:** 60 sqft – 2500 sqft (approx.)

**Workstations:** 1 – 100 employees

### Contact



**Tony Beck**

020 7960 0261

tony@matthewblairsolutions.co.uk



MBS Property

Mercury House, 117 Waterloo Road, London SE1 8UL

Registered no. 09361329 / Registered in England / Registered office is 89 Tolworth Park Road, KT6 7RJ.  
Matthew Blair Solutions is trading as MBS Recruitment and MBS Property since Oct'2017.