

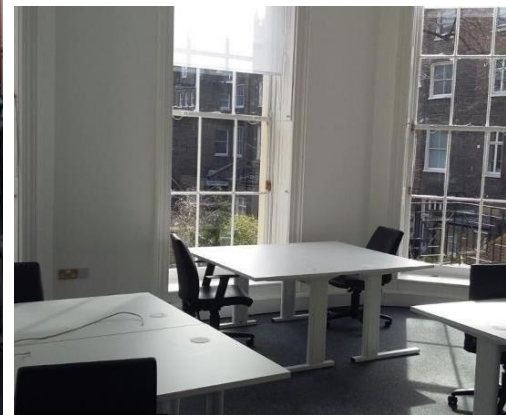
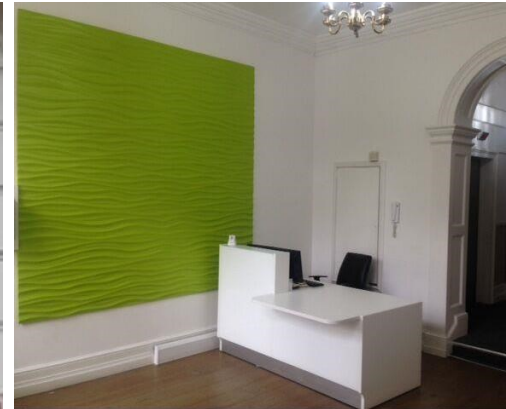


Matthew Blair Solutions

020 7960 0261

MBS Property

[www.mbspropertysearch.co.uk](http://www.mbspropertysearch.co.uk)



## Business Cube

55-56 Russell Square, London, WC1B 4HP

### Location

### Description

Commanding a prime location on the southern side of the prestigious Russell Square in the Bloomsbury area of Central London, 55-56 Russell Square is comprised of two stunning Georgian Buildings. Bloomsbury's splendid garden squares and wide streets have been home to thinkers for centuries and it's properties are adorned with blue plaques denoting that a great writer, scientist or philosopher once lived here. These historic academic and cultural associations have attracted world-leading educational institution and hospitals to the area. University College London, The British Museum and Great Ormond Street Hospital all lie within Bloomsbury, making it a hub of learning and medicine.

Business Cube's fully refurbished Grade II listed office, overlooking Russell Square, can allow your company the opportunity to work in an inspirational environment full of history and period charm, whilst taking advantage of the latest technological and business amenities.

### Key Features

- Air conditioned
- High speed internet
- Outside Space
- Board room
- Fully Furnished

**Rent:** From £650.00 per workstation, per month

**Area:** 60 sqft – 2500 sqft (approx.)

**Workstations:** 1 – 100 employees

### Contact



**Tony Beck**

020 7960 0261

[tony@matthewblairsolutions.co.uk](mailto:tony@matthewblairsolutions.co.uk)

MBS Property

Mercury House, 117 Waterloo Road, London SE1 8UL

Registered no. 09361329 / Registered in England / Registered office is 89 Tolworth Park Road, KT6 7RJ.  
Matthew Blair Solutions is trading as MBS Recruitment and MBS Property since Oct'2017.