

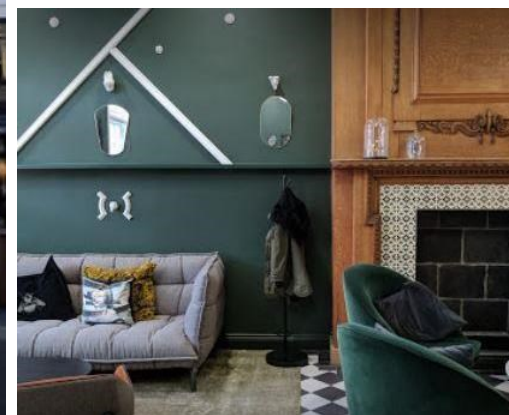


Matthew Blair Solutions

020 7960 0261

MBS Property

www.mbspropertysearch.co.uk



25 Eccleston Place, Victoria, Westminster, SW1W 9NF

Location

Located between the historic Belgravia, Pimlico and Sloane Square, situated in the beautiful development, Eccleston Yards, next to the incredibly well-connected Victoria station. With a vision to create a new destination bringing together food, fashion, retail, coworking and wellbeing, this is a great spot for locals and commuters from further afield, nestled within a beautiful walled garden.

Description

Community is at the heart of everything this centre offers. Striving to create an environment where office members can work, network, learn, grow and socialise together.

Able to accommodate larger teams as your company grows. But wherever you call HQ, all of the brands coworking spaces are open for you to drop into.

Key Features

- Outdoor courtyard & Dog Friendly
- Phone Booths & Breakout Spaces
- Showers & bike storage
- 24hrs access & security
- 70person auditorium & Free Meeting Rooms

Rent: From £675.00 per workstation, per month

Area: 60 sqft – 2500 sqft (approx.)

Workstations: 1 – 100 employees

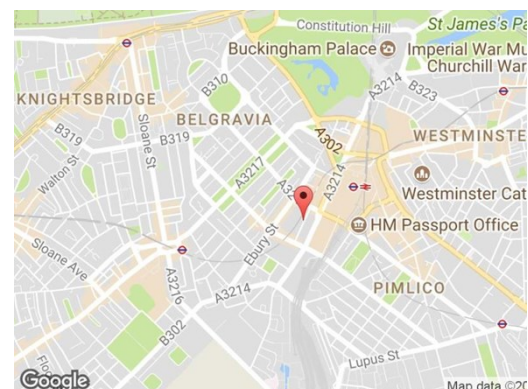
Contact



Tony Beck

020 7960 0261

tony@matthewblairsolutions.co.uk



MBS Property

Mercury House, 117 Waterloo Road, London SE1 8UL

Registered no. 09361329 / Registered in England / Registered office is 89 Tolworth Park Road, KT6 7RJ.
Matthew Blair Solutions is trading as MBS Recruitment and MBS Property since Oct'2017.