

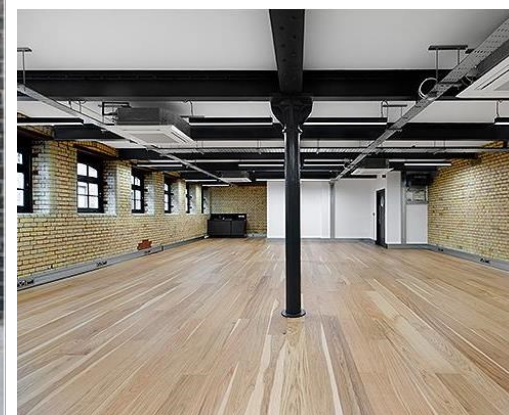


Matthew Blair Solutions

020 7960 0261

MBS Property

www.mbspropertysearch.co.uk



Cargo Works, 1 - 2 Hatfields, Southbank, Southwark, SE1 9PG

Location

Cargo Works is situated in a great location close to the South Bank Complex and the OXO Tower in SE1. Local amenities include a huge range of restaurants, shops and bars as well a selection of cultural entertainment such as the Tate Modern, the Royal National Theatre and the Shakespeare Globe Theatre are within close distance.

Description

Offering a stylish range of office and studios spaces, some with balconies and stunning river views, and boasting a stylish, modern reception with a superb cafe and co-working space, Cargo Works has the space and facilities to help your business thrive.

The building has also achieved a Gold WiredScore, awarded in recognition of reliable and diverse internet connectivity and prepared for connectivity needs of future customers.

Key Features

- 24 Hour Access
- Meeting Rooms
- Centre Manager
- Recycling Facilities
- Showers

Rent: From £375.00 per workstation, per month

Area: 60 sqft – 2500 sqft (approx.)

Workstations: 1 – 100 employees

Contact



Tony Beck

020 7960 0261

tony@matthewblairsolutions.co.uk



MBS Property

Mercury House, 117 Waterloo Road, London SE1 8UL

Registered no. 09361329 / Registered in England / Registered office is 89 Tolworth Park Road, KT6 7RJ.
Matthew Blair Solutions is trading as MBS Recruitment and MBS Property since Oct'2017.