

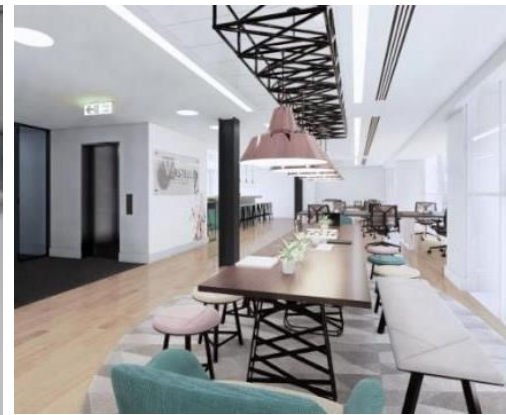


Matthew Blair Solutions

020 7960 0261

MBS Property

www.mbspropertysearch.co.uk



8 Kean Street, Covent Garden, WC2B 4AS

Location

The building is situated on the west side of Kingsway at the southern end, close to its junction of Aldwych. Located close to Covent Garden, the entertainment and leisure facilities of this busy West End villages are close by. Holborn, Covent Garden and Embankment Tube Stations are a short walk away and numerous bus routes are accessible from Kingsway.

Description

The complete office solution - Tailored space designed in your brand, for how your people work best, all on flexible terms.

How it Works:

1. Location: Identifying the neighbourhoods where you can thrive.
2. Workplace Strategy: Designing for how your team works.
3. Design: Tailoring the space to reflect your identity.
4. Furnish and Brand: Optimizing for different workstyles and branding for your identity.
5. Space Operations: Managing the space behind the scenes

Key Features

- All Inclusive Tailored Managed Office
- Your own space on Flexible Terms
- Your Brand, Your Office
- Meeting Rooms & Call Pods
- Kitchenette & Bespoke Breakout Space

Rent: per month

Area: 2,713 sqft

Workstations:

Contact



Tony Beck

020 7960 0261

tony@matthewblairsolutions.co.uk



MBS Property

Mercury House, 117 Waterloo Road, London SE1 8UL

Registered no. 09361329 / Registered in England / Registered office is 89 Tolworth Park Road, KT6 7RJ.
Matthew Blair Solutions is trading as MBS Recruitment and MBS Property since Oct'2017.