

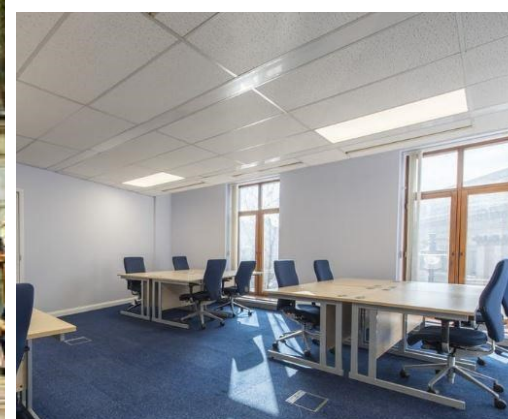


Matthew Blair Solutions

020 7960 0261

MBS Property

www.mbspropertysearch.co.uk



Pennine Way 2A Charing Cross Road, Covent Garden, WC2H 0HG

Location

Located on Charing Cross Road directly opposite the National Portrait Gallery, a location recognized across the globe. This Grade II listed building, offers views over many of the city's most renowned landmarks and is situated just moments away from Leicester Sq, Charing Cross, and Embankment tube stations.

Description

Able to offer a wide range of office solutions and sizes all under one roof. From single dedicated desks up to 5,000sq ft of open plan space, the building provides bright naturally lit, air-conditioned facilities offering the perfect working environment.

In addition to offering a variety of different office solutions, clients can also enjoy the multiple communal areas including a 3000sq ft members lounge with coffee bar, as well as leisure facilities including a table tennis room and mini gym.

Key Features

- Showers & Gym
- Breakout Areas
- Large Event/Residents Lounge
- Table Tennis / Pool Table
- Co Working Area

Rent: From £550.00 per workstation, per month

Area: 60 sqft – 2500 sqft (approx.)

Workstations: 1 – 100 employees

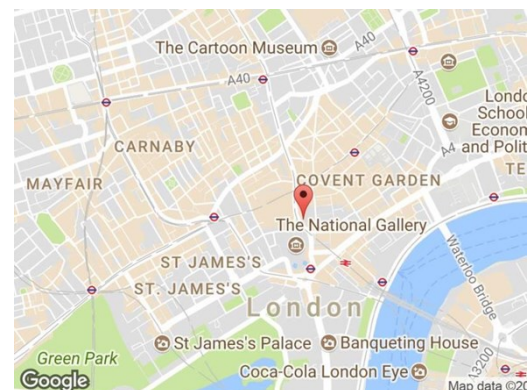
Contact



Tony Beck

020 7960 0261

tony@matthewblairsolutions.co.uk



MBS Property

Mercury House, 117 Waterloo Road, London SE1 8UL

Registered no. 09361329 / Registered in England / Registered office is 89 Tolworth Park Road, KT6 7RJ.
Matthew Blair Solutions is trading as MBS Recruitment and MBS Property since Oct'2017.