



Matthew Blair Solutions

020 7960 0261

MBS Property

www.mbspropertysearch.co.uk



## Landmark 26 Whitehall Road, Leeds, LS12 1BE

### Location

No1 Leeds is the most technically advanced business centre in Leeds. Situated on the Westside of Leeds City Centre, it has excellent transport links from Leeds Mainline station and is close to Leeds International airport.

### Description

Productivity starts the moment you join us at these modern workspaces in Leeds's thriving financial quarter. You're in the thick of it here in this top-notch 'green' building.

Lots of communal space including an onsite cafe that serves hot breakfast and lunches. Proximity and price of parking is great

### Key Features

- 24 Hour Access & 24 Hour Security
- Air Conditioning
- Boardrooms - Break Areas & Lounge
- CCTV
- High Speed Internet

**Rent:** From £250.00 per workstation, per month

**Area:** 60 sqft – 2500 sqft (approx.)

**Workstations:** 1 – 100 employees

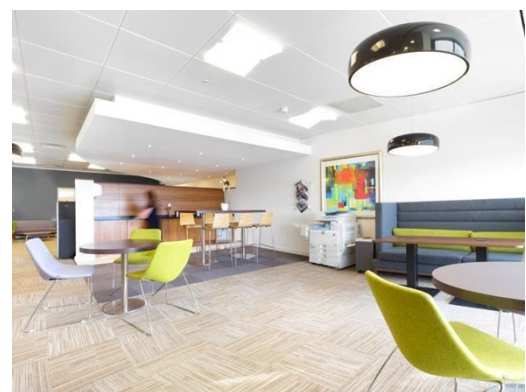
### Contact



**Tony Beck**

020 7960 0261

tony@matthewblairsolutions.co.uk



MBS Property

Mercury House, 117 Waterloo Road, London SE1 8UL

Registered no. 09361329 / Registered in England / Registered office is 89 Tolworth Park Road, KT6 7RJ.  
Matthew Blair Solutions is trading as MBS Recruitment and MBS Property since Oct'2017.