

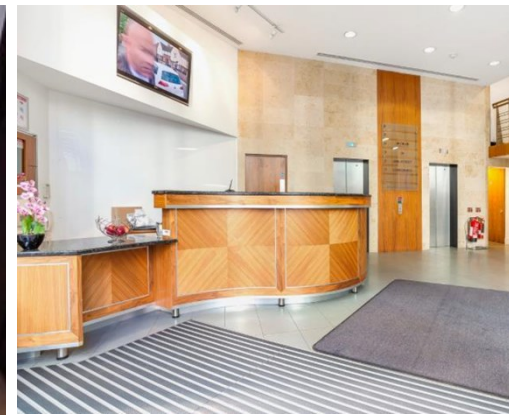


Matthew Blair Solutions

020 7960 0261

MBS Property

www.mbspropertysearch.co.uk



## 34 Lime Street, London, EC3

### Location

### Description

This striking six storey development offers Grade A office accommodation with impressive views over Lloyd's of London and surrounding tower cluster.

The sixth floor offers high quality office accommodation that is fully fitted out with a roof terrace.

Located immediately behind Leadenhall Market and Lloyd's of London this vibrant and exciting location is home to a new generation of high rise tower buildings.

Lime Street is very well connected with Bank, Monument, Liverpool Street and Fenchurch Street stations within a 5 minute walk. Liverpool Street Crossrail station is due to open in 2018.

### Key Features

- Large manned reception
- Car parking
- Showers / bicycle facilities / storage
- VRF air conditioning
- Terrace on West elevation

**Rent PA:** £306,450.00 (£67.50 PSF)

**Area:** 4,540 sqft (422 sqm)

**Service Charge:** £38,226.80 (£8.42 PSF)

**Rates Payable:** £21.79

### Contact



**Tony Beck**

020 7960 0261

tony@matthewblairsolutions.co.uk



MBS Property

Mercury House, 117 Waterloo Road, London SE1 8UL

Registered no. 09361329 / Registered in England / Registered office is 89 Tolworth Park Road, KT6 7RJ.  
Matthew Blair Solutions is trading as MBS Recruitment and MBS Property since Oct'2017.